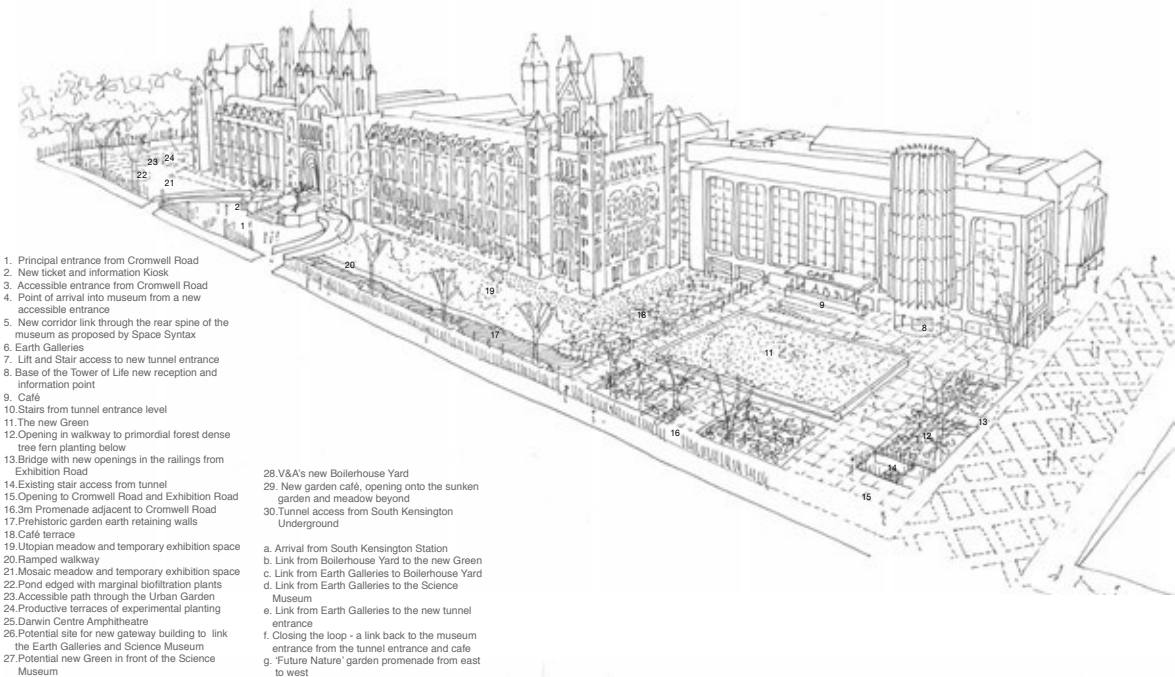




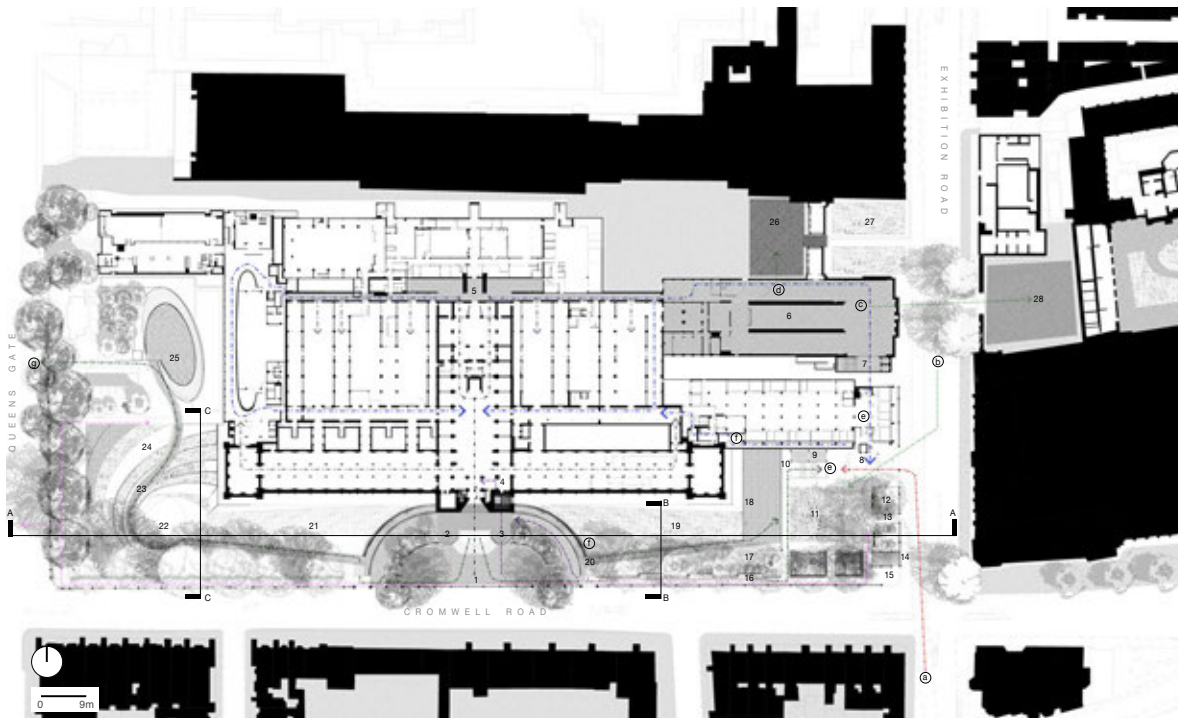
A new green for South Kensington



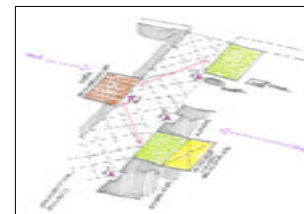
1. Principal entrance from Cromwell Road
 2. New ticket and information kiosk
 3. Accessible entrance from Cromwell Road
 4. Point of arrival into museum from a new accessible entrance
 5. New corridor link through the rear spine of the museum as proposed by Space Syntax
 6. Earth Galleries
 7. Lift and Stair access to new tunnel entrance
 8. Base of the Tower of Life new reception and information point
 9. Cafe
 10. Stairs from tunnel entrance level
 11. The new Green
 12. Opening in walkway to primordial forest dense tree fern planting below
 13. Bridge with new openings in the railings from Exhibition Road
 14. Existing stair access from tunnel
 15. Opening to Cromwell Road and Exhibition Road
 16. 3m Promenade adjacent to Cromwell Road
 17. Prehistoric garden earth retaining walls
 18. Cafe terrace
 19. Utopian meadow and temporary exhibition space
 20. Ramped walkway
 21. Mosaic meadow and temporary exhibition space
 22. Pond edged with marginal biofiltration plants
 23. Accessible path through the Urban Garden
 24. Productive terraces of experimental planting
 25. Darwin Centre Amphitheatre
 26. Potential site for new gateway building to link the Earth Galleries and Science Museum
 27. Potential new Green in front of the Science Museum
 28. V&A's new Boilerhouse Yard
 29. New garden cafe, opening onto the sunken garden and meadow beyond
 30. Tunnel access from South Kensington Underground
- a. Arrival from South Kensington Station
 b. Link from Boilerhouse Yard to the new Green
 c. Link from Earth Galleries to Boilerhouse Yard
 d. Link from Earth Galleries to the Science Museum
 e. Link from Earth Galleries to the new tunnel entrance
 f. Closing the loop - a link back to the museum entrance from the tunnel entrance and cafe
 g. 'Future Nature' garden promenade from east to west



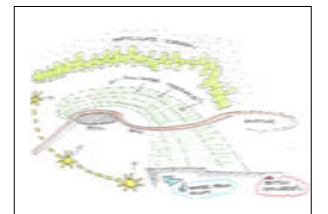
Proposed Section AA



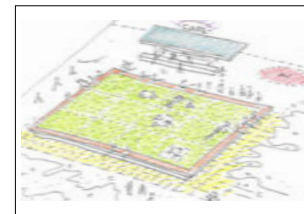
Proposed Site Plan



3 Interlinked courts and gardens off Exhibition Road



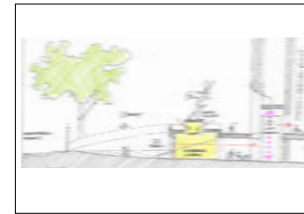
An Urban Garden



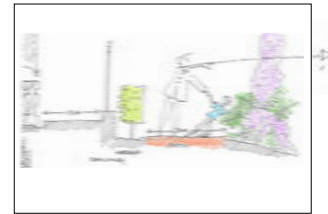
A new Green for South Kensington



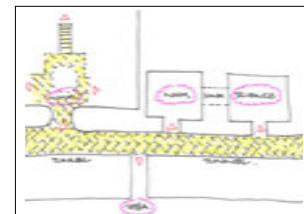
A garden cafe straight off the tunnel



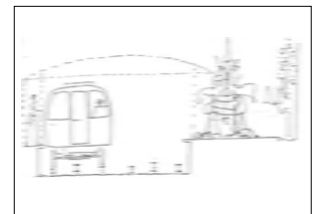
Parity of access for all users at the principal entrance



A new promenade along the principal front



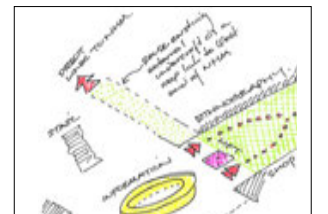
Shared connections to tunnel from 3 institutions



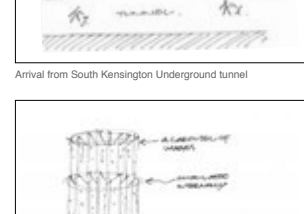
Diplodocus on the spare platform in South Kensington



Arrival from South Kensington Underground tunnel



Closing the Loop



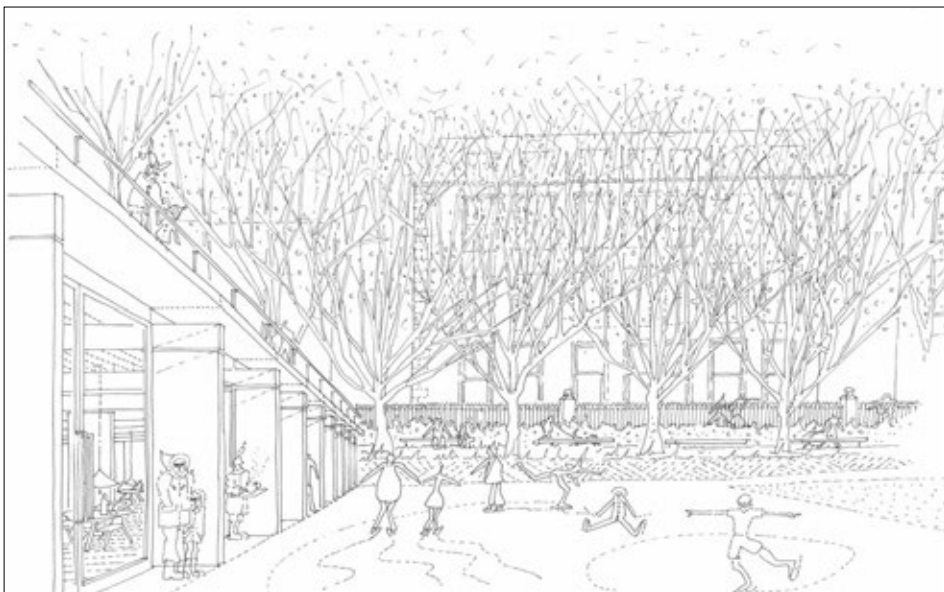
Tower of Life - A campanile for the new square



All retaining walls in the cafe, terrace and garden will be created as representations of the development of the Earth's crust in section.



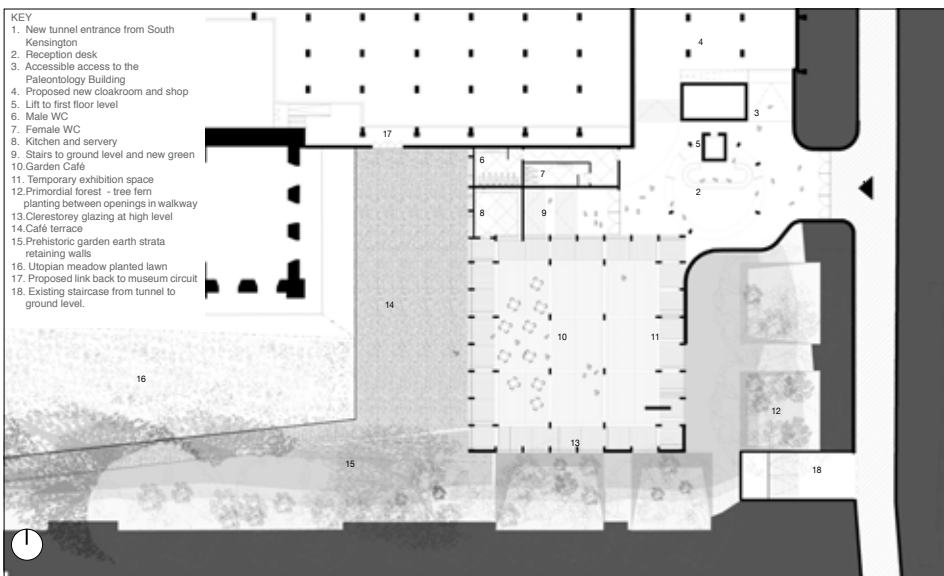
Interior view of the new garden café, with terrace and meadow beyond



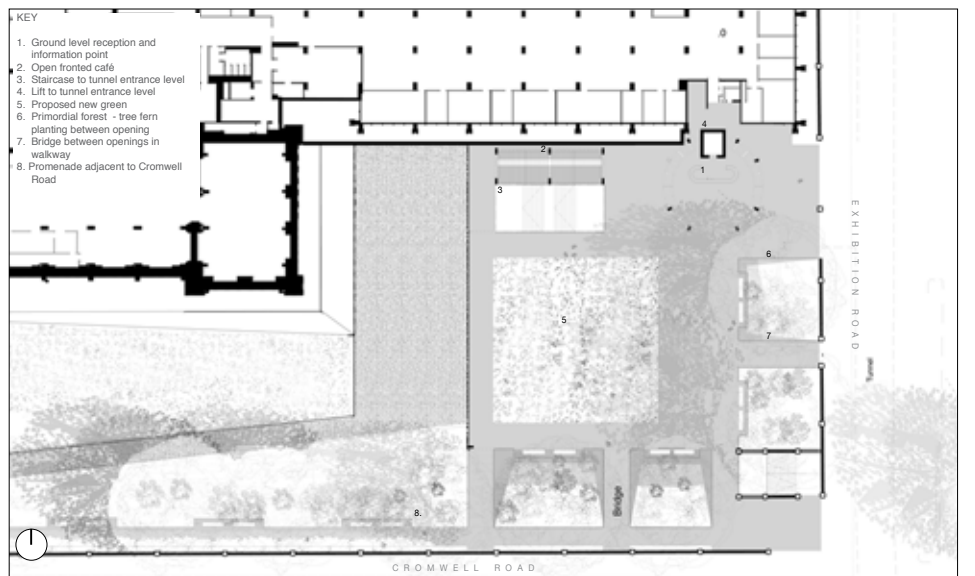
Winter view of the café terrace, with the ice rink installed



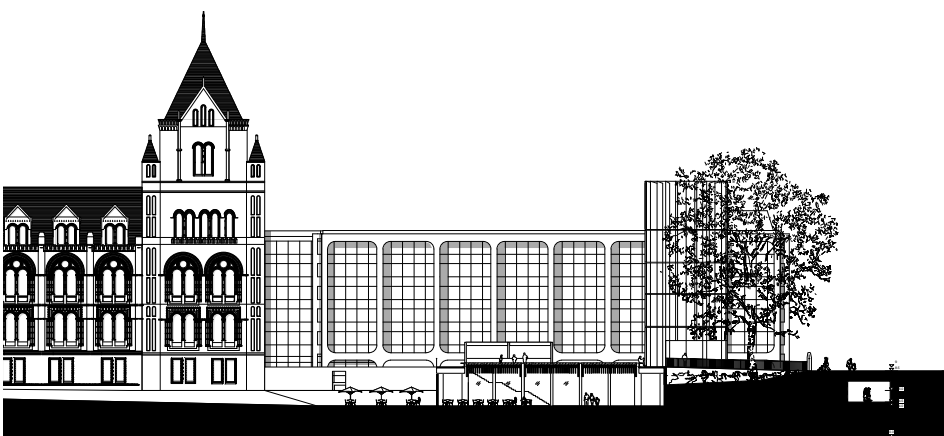
Summer view of the café terrace



Proposed basement level plan, 1:500



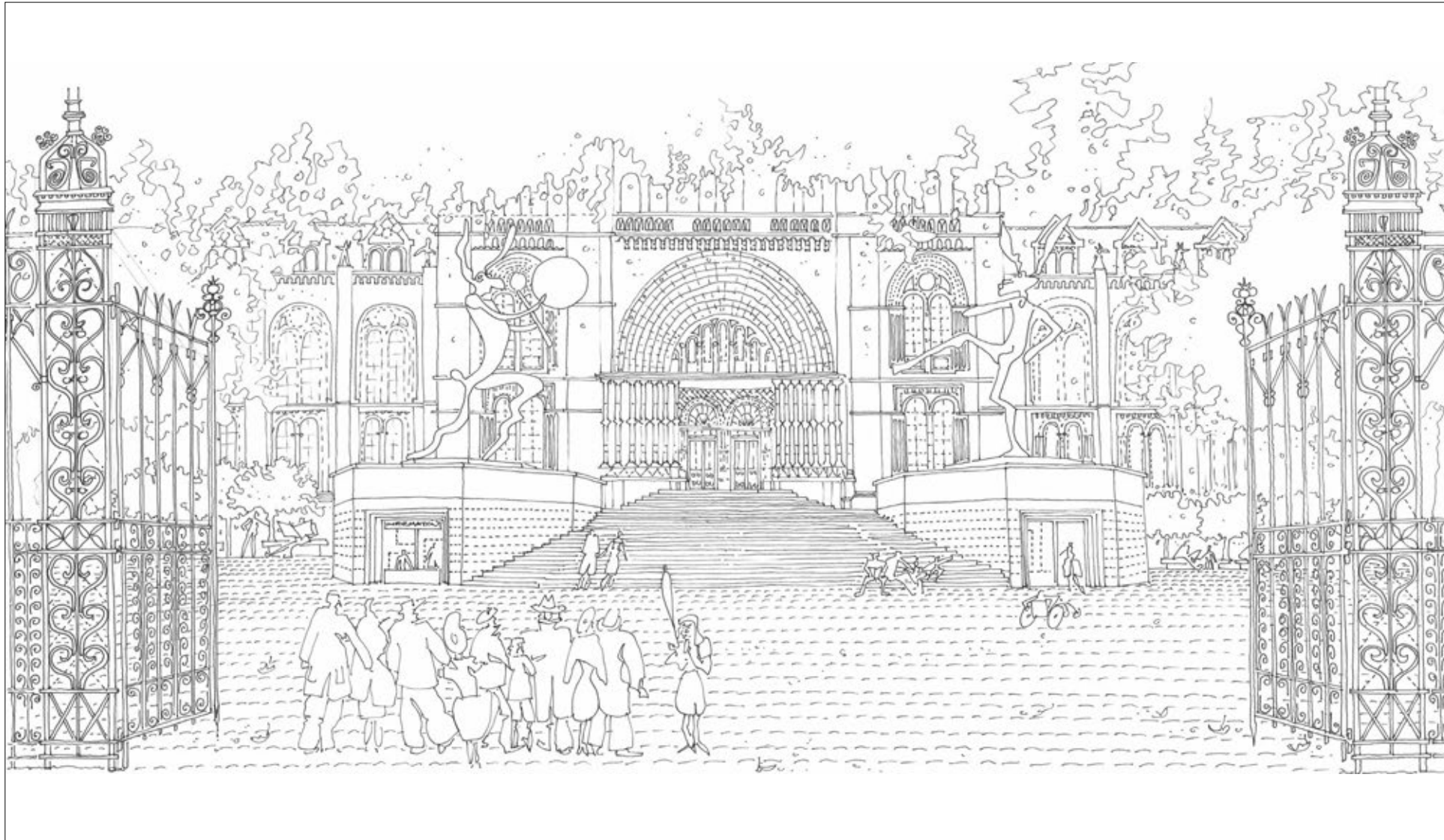
Proposed ground level plan, 1:500



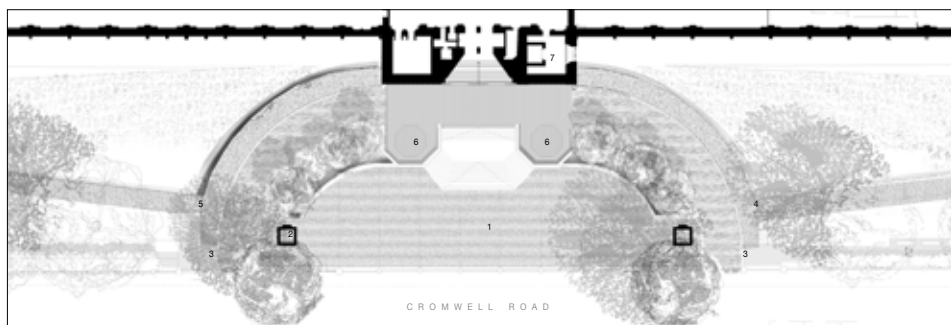
Proposed Section AA, through garden café and tunnel from South Kensington underground 1:500

Given the importance of the institutions in South Kensington, there is relatively little public space for browsing, pausing and casually circulating. The enhancement of Exhibition Road was intended to make such a civic space. The creation of the Boilerhouse Courtyard in the V&A will extend Exhibition Road into the building. This newly conceived urban realm will begin to thrive if we can create more spaces and uses ancillary to the main route. We propose a little network of greens and squares extending along the road and visually linked diagonally one to the other. This kind of adjacency will enhance the presence of all of the institutions. One square could be created out of the little green between the Earth Galleries and Science Museums. We propose another green above our new café building on the corner of Exhibition Road and Cromwell Road. It will be a slightly raised lawn of 20m x 20m surrounded by a continuous bench with a paved ambulatory around the edges. The existing trees will be maintained, giving it a settled presence. They will be contained in planted areas overflowing with tree ferns creating a strong sensual character at the threshold of the museum. The square will have its own campanile, announcing the presence of a new entrance to the Museum. We are suggesting that an open sided café could be positioned along the side of the Paleontology Building, giving a lively edge and screening the rather dark glass facade. It could serve visitors using the bench and the lawn.

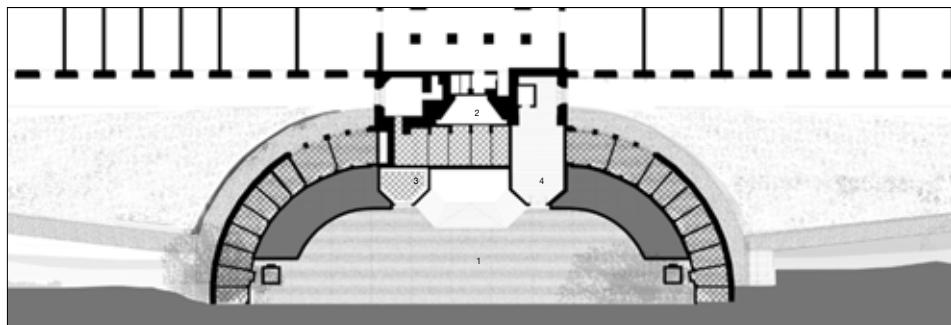
A significant number of visitors access the Museum from the tunnel connecting from South Kensington station. We have created a substantial new entrance into the Museum from the tunnel. We have moved the entrance from the southeast corner to a position beneath the Paleontology Building tower. This allows us to create a link to ground level within the tower. Our main access point at tunnel level gives directly onto a new information desk which offers visitors timed access to the Museum using a simple free ticketing system linked electronically to the other entrances. At this point, on busy days, visitors receive a time slot to enter the building. On receipt of their allocation, they have the opportunity to visit a gallery, walk in the garden, visit the café or go into the shop. The highly visible presence of the exhibition space, café and information point creates a strong visible presence for the museum from the tunnel.



Cromwell Road Entrance, with new kiosk and accessible access



Proposed Ground Plan of Cromwell Road Entrance



Proposed Basement Level Plan of Cromwell Road Entrance



KEY

1. Proposed new paving
2. Potential location for new kiosk
3. 3m Promenade adjacent to Cromwell Road
4. Stair access down to Prehistoric Garden, tunnel entrance and café
5. Stair access down to Urban Garden promenade
6. New plinths for temporary exhibits
7. Arrival from accessible entrance at lower level



KEY

1. Proposed new paving
2. Existing plant space beneath Cromwell Road entrance
3. Proposed ticket/information kiosk
4. Proposed accessible entrance to museum



Tower of Winds, Toyo Ito

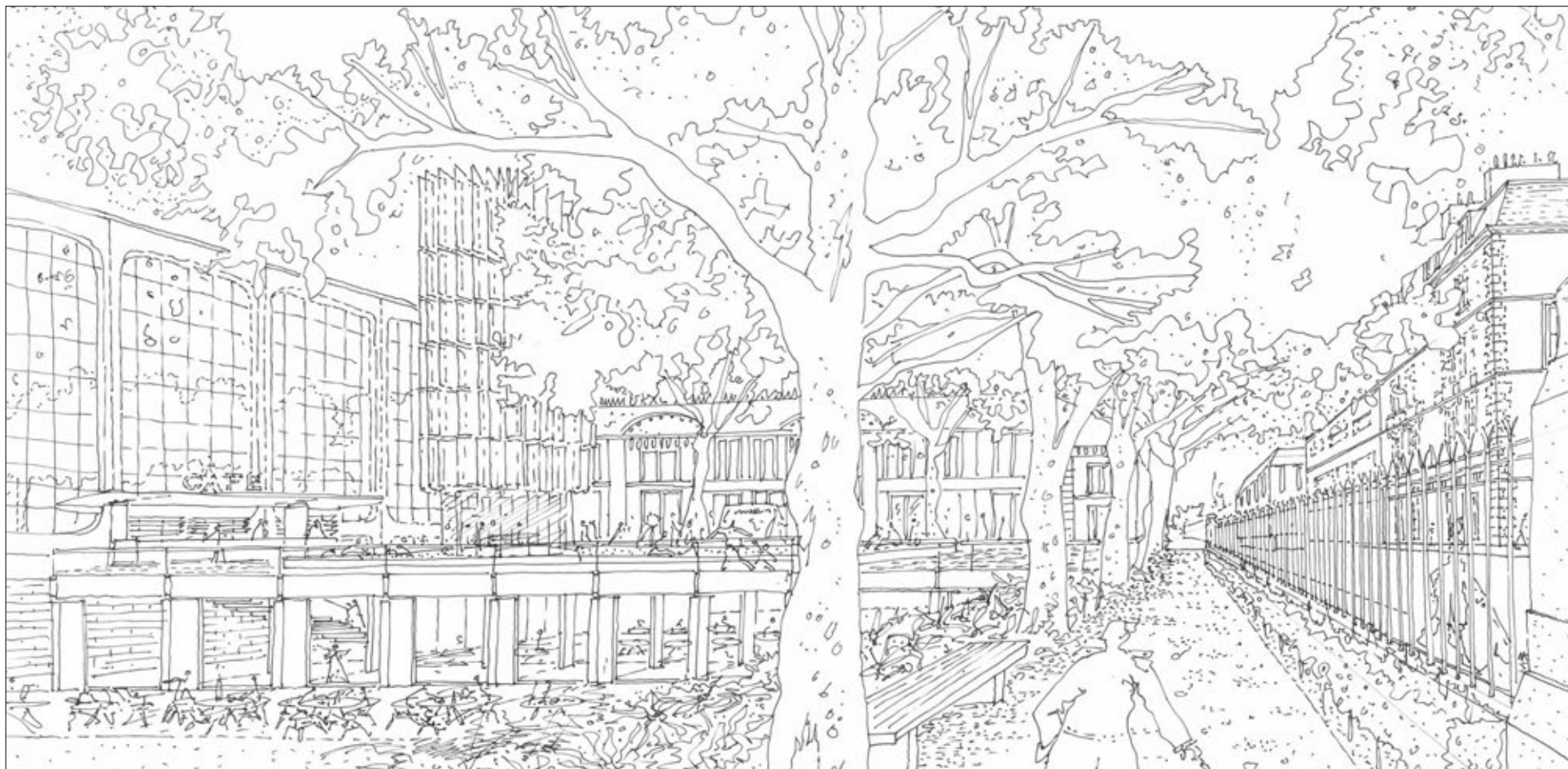


1. Charlottenhof, Potsdam-Sanssouci, Schinkel; 2. Thermal Baths at Vals (rooflight detail), Peter Zumthor; 3. Landscaping at the Olympic Park, 4. Nordic Pavilion, Sverre Fehn

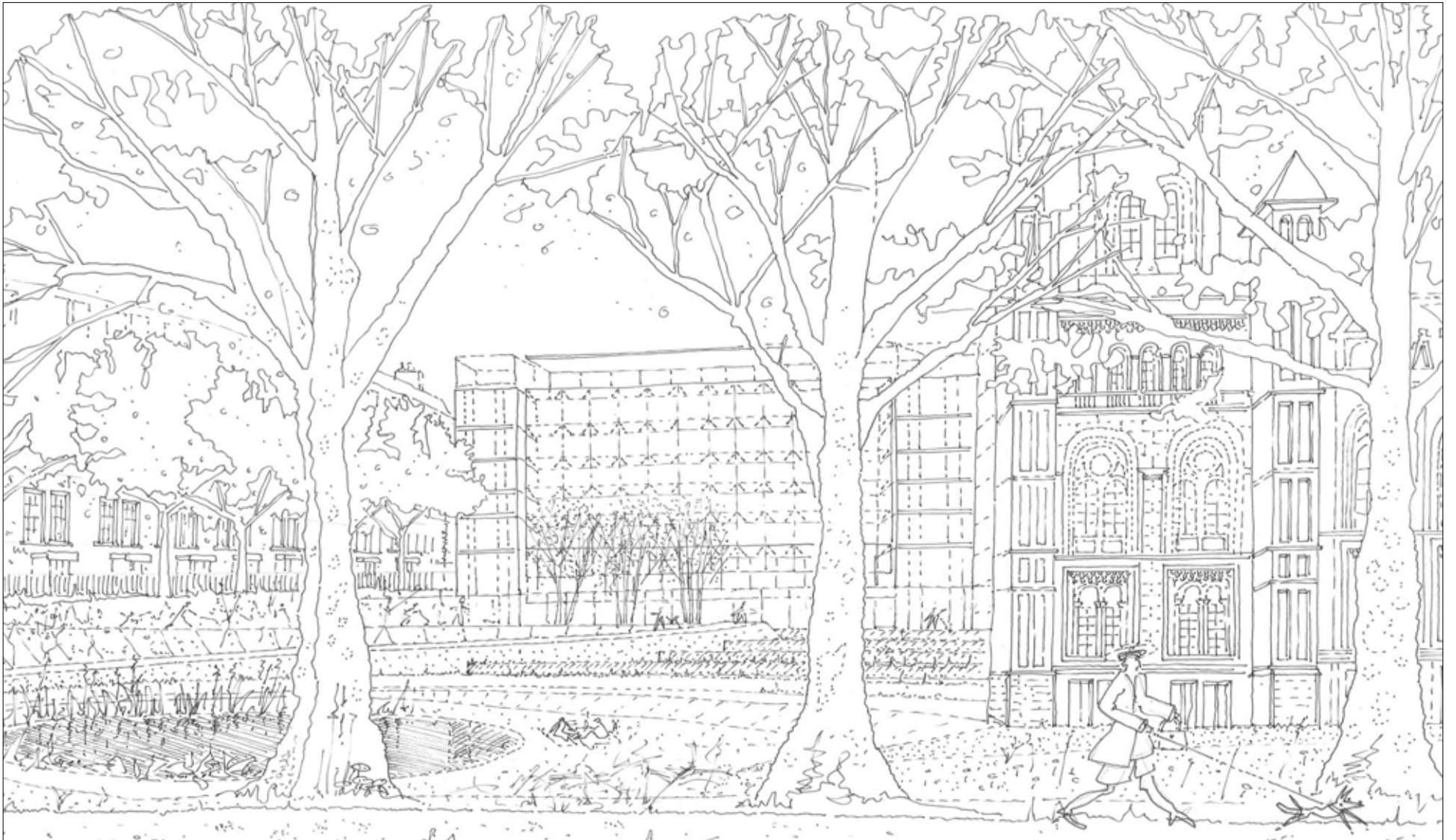
The principal entrance off Cromwell Road is a marvellous architectural set piece. The grand archway at the top of the steps creates a beautiful portal. The last few steps up from the approach ramps create a significant obstacle for disabled visitors. It should be possible to provide party of access for all visitors. One difficulty is that it is impossible to create access around the main door itself because of the very high level of rich architectural detail on every face of the building. We suggest that it would be possible to create an access route under one of the two flanking bastions framing the main steps. The route could be illuminated by roof lights on the bastion. The balancing (unused) bastion could contain a small information point. We imagine that the two bastions could become sites for temporary artworks in the same way as the Royal Academy Courtyard is being used at the moment. We loved the two Barry Flanagan sculptures recently sited there so we have borrowed them for our illustration. The forecourt is then slightly lowered and simply paved in cobbles, while a few of the listed railing bays are opened up as gateways into the forecourt.

The pavement along Cromwell Road is very narrow and the traffic is busy. It is difficult for groups and almost impossible with small children. The view of the wonderful south facade is obscured by unsympathetic low level planting. We propose a new path within the railings creating a promenade linking the east west and centre of the site. The path is linked by a sloping route to the lower level gardens.

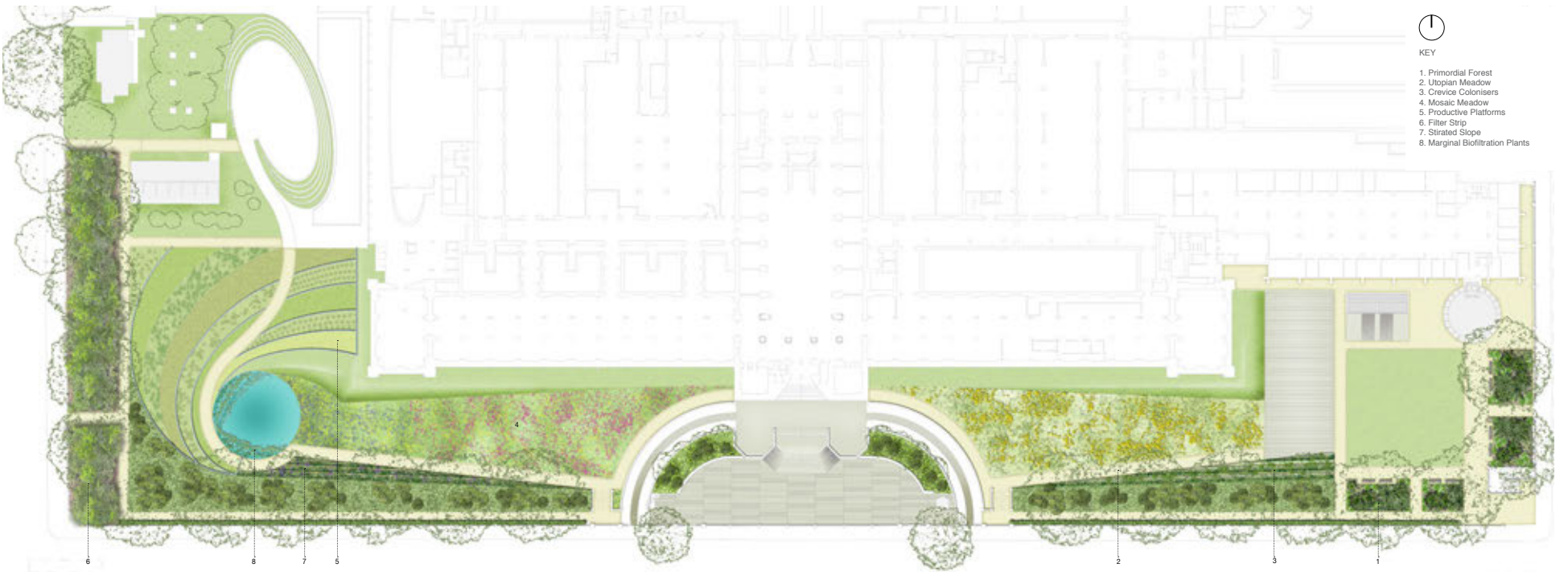
A significant bay extends out from the south facade of the Paleontology Building. It will now stand in the new square we are making. We propose to open up the ground and basement levels to give disabled access to the two main levels (tunnel and square). It will become a doorway to the museum. The existing concrete frame and dark glass are rather forbidding, so we intend to over clad the existing structure in an array of stained glass panels holding drawings of nature from geology at the base to atmosphere at the top. This tower will rise up to just above the cables supporting the glasshouse. It will form a vibrant campanile in the square and announce the presence of the museum at this important junction.



View along promenade, facing east towards the new café and terrace with Green above



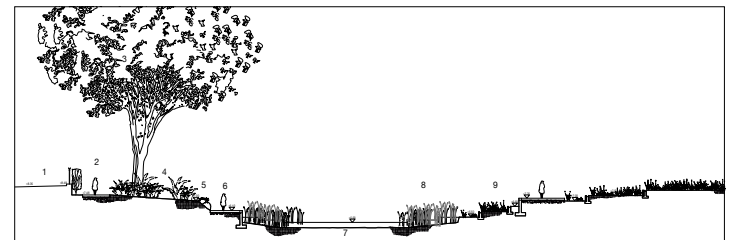
View along promenade facing west towards the productive platforms of the experimental urban garden



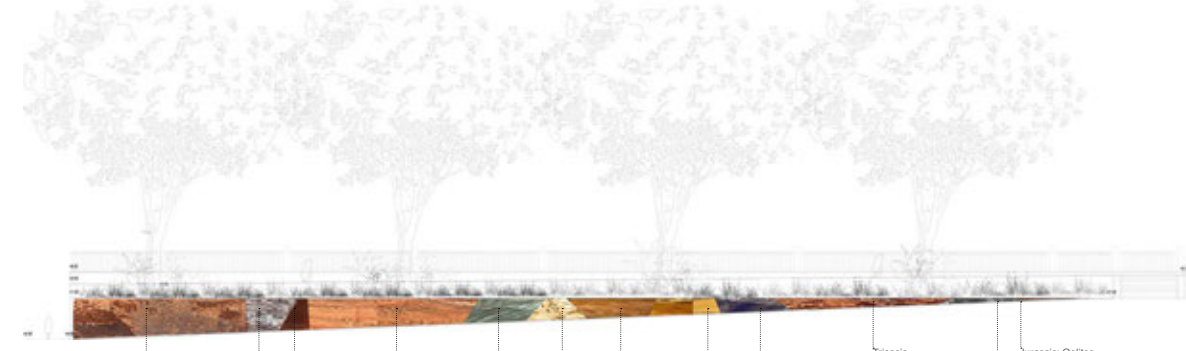
Proposed planting strategy masterplan, 1:750



1. Primordial Forest: Cycads, Horsetails, Tree Ferns, Ground Ferns
2. Utopian Meadow: Cornflower, Musk Mallow, Fernleaf Yarrow, Devil's Bit Scabious
3. Crevice colonisers: Houseleek, Thyme, Reflexed Stonecrop, Maidenhair, Spleenwort
4. Mosaic Meadow: Cowslip, Field Scabious, Lady's Smock, Snake's Head Fritillary, Ragged Robin
5. Productive Platforms: Dandelion, Burdock, Liquorice, Mint, sugar beet, Hazel, Red Currants, Alpine Strawberries
6. Filter Strip: Hazel, Elder, Willow, Wild roses, Honeysuckle, Bluebell and Primrose
7. Striated Slope: Snowy Woodrush, Sweet Woodruff, Litore muscari
8. Marginal Biofiltration Plants: Arrowhead, Barred horsetail, Blue iris, Double marsh marigold



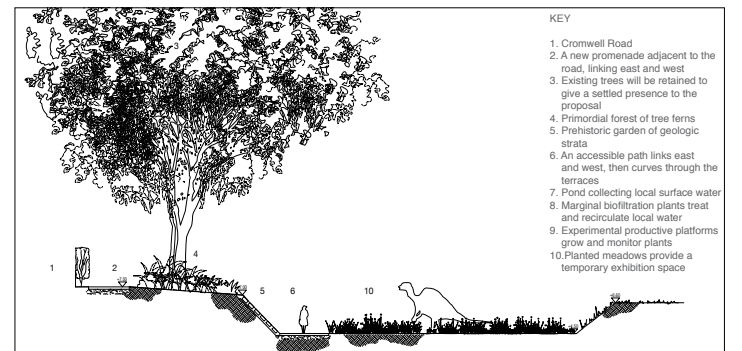
Proposed Section BB



Proposed horizontal layout of geological sequence along prehistoric garden bank



Concept images of rock patterns in the British Isles



Proposed Section CC

Earth retaining walls surround the perimeter of the new entrance, cafe, exhibition space. They extend out into the garden and gradually taper away as the ground rises towards the main entry along Cromwell Road, then continuing into the western garden. The idea of a cut in the ground has powerful resonances in the history of the development of geological thought. The sectioning of the landscape for civil engineering work in the 18th century gave great impetus to the concept of a temporal dimension to the structure of the earth. Here we use this idea to create a representation of geological strata on the face of the retaining walls.

The culmination of the landscape sequence from east to west will be a new garden exploring 'future nature' and the current issues and research into urban survival in a changing climate: air, water, soil, biodiversity and human engagement. A fan of terraces will rise from a circular pond that collects, filtrates and recirculates the local surface water. The pond will connect directly into the London aquifer. On the rising south-facing terraces a rich variety of experimental plants will be grown and monitored, demonstrating the best ways to encourage biodiversity, food production, water and air filtration, composting and soil creation. Coppice woodland will protect the area from the surrounding roads. An accessible path will curve from the west meadow around the pond and up through the terraces to the Darwin Centre entrance. Irrigation rills and rain water collection channels will snake down through the terraces to the pond. The terraces will be elegantly sculptural and highly functional for research, education and wildlife.