

Sketch of approach and views across Duke of York Square

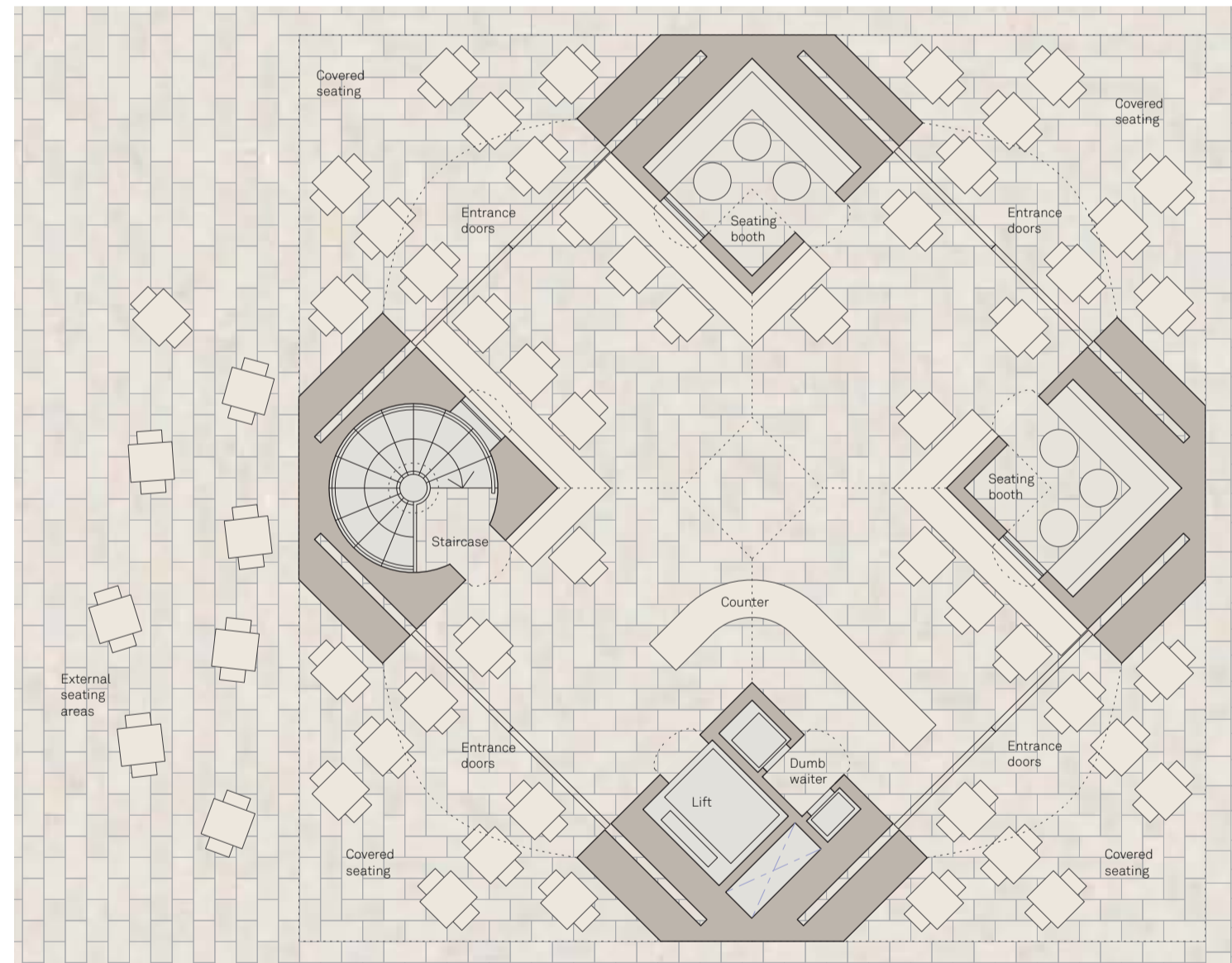
**A pavilion to be viewed and approached from all sides**

Our design proposes a pavilion as a 'solitaire' - a building which will be viewed and approached from all sides. As such it is a building without a front or a back, but is presented equally well from every direction.

Its unique identity has emerged from a careful examination of the pavilion's context and also its purpose. Responding to these conditions, the form is generated from two vaulted spaces that cross one-another diagonally, creating routes and views under a square roof canopy. The square canopy forges a strong relationship with the surrounding urban masterplan, and the vaults within provide welcoming cafe / restaurant spaces inside.

Externally the vaults provide generous canopies, attracting visitors from all directions of approach and provide permanently sun-shaded areas for terraced seating onto each aspect of Duke of York Square. These arched canopies form entrances to the pavilion at the same time as framing views to activities in and around the pavilion.

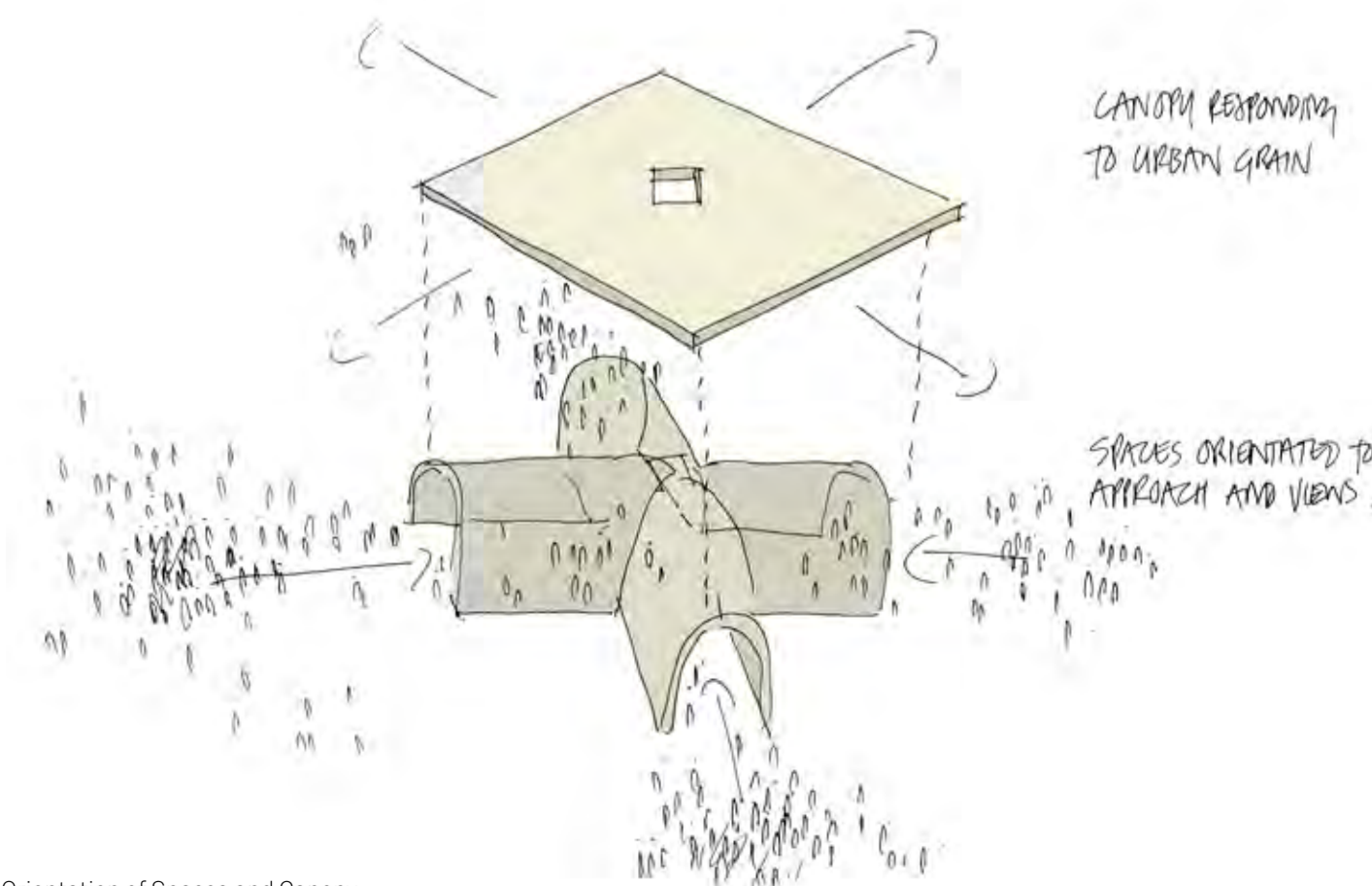
The vaulted internal space give the pavilion a strong identity - which provide a very comfortable environment to enjoy a drink or a meal, whilst at the same time frame very large windows - which have a strong visual and physical connections to the public realm.



Proposed Ground Floor plan  
Scale 1:100



Looking South across Duke of York Square towards the new pavilion



Orientation of Spaces and Canopy



Concept Model - Elevation of model on approach to corner



Concept Model - Elevation of model on axis to route and view through pavilion



Concept Model - Elevation of model from North of building indicating canopies and entrances



Aerial image looking from South-West over running track to cafe

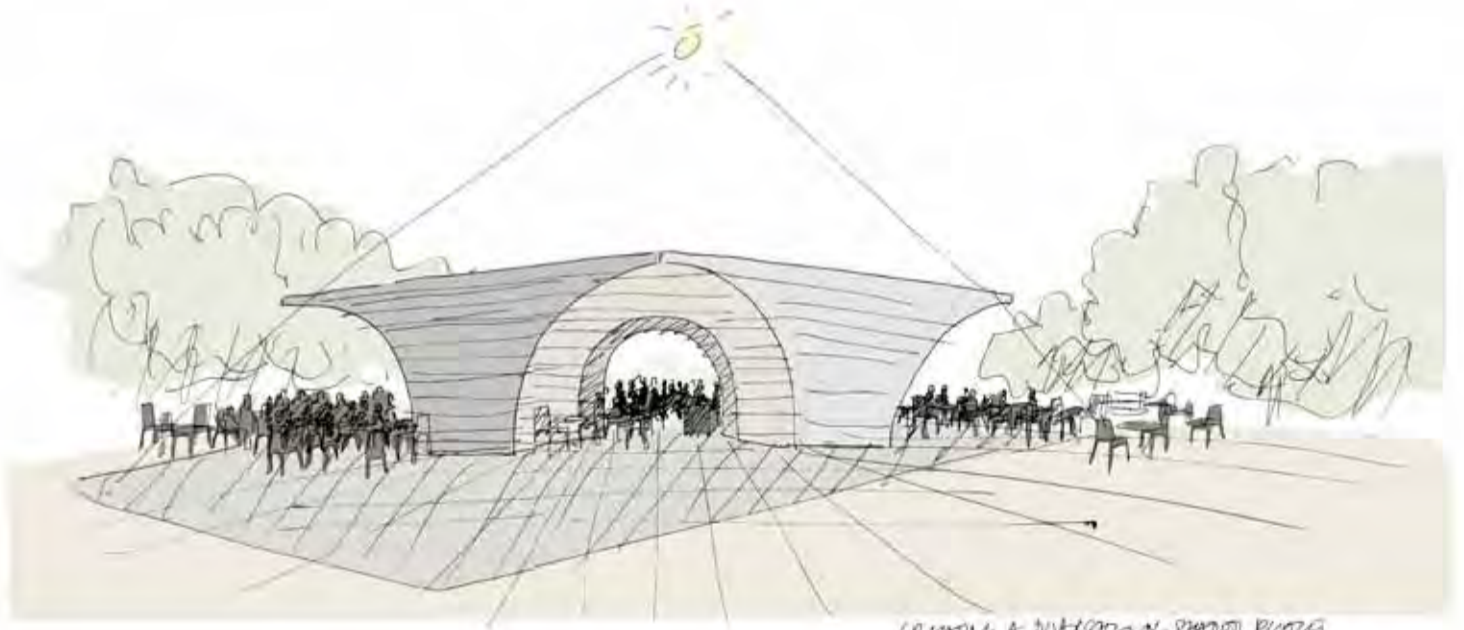
**A diversity of rooms inside and outside the pavilion**

The arrangement of the pavilion is very simply organised around the cruciform plan, defined by four supports which the vaults spring from.

Inside these supports are four rooms containing: lift, dumb waiter, a spiral staircase (leading to the kitchen and toilets within the basement) and intimate booths for a quiet retreat from the main space.

The arrangement allows excellent sight-lines from all aspects from inside to outside, provides a diversity of places to sit (at least 40-50 internally and at least 60 externally), as well as creating a simple legible space for all ages and levels of accessibility. In warm weather the glazing to each of the four entrances can slide away into the supports creating a pavilion which is completely open to all sides of the square.

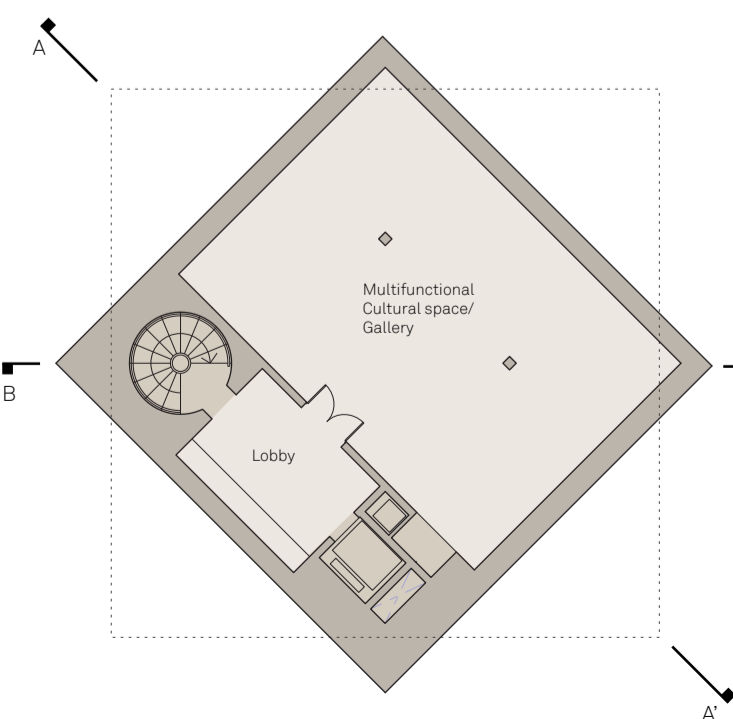
PROVIDING A DIVERSITY OF SPACES



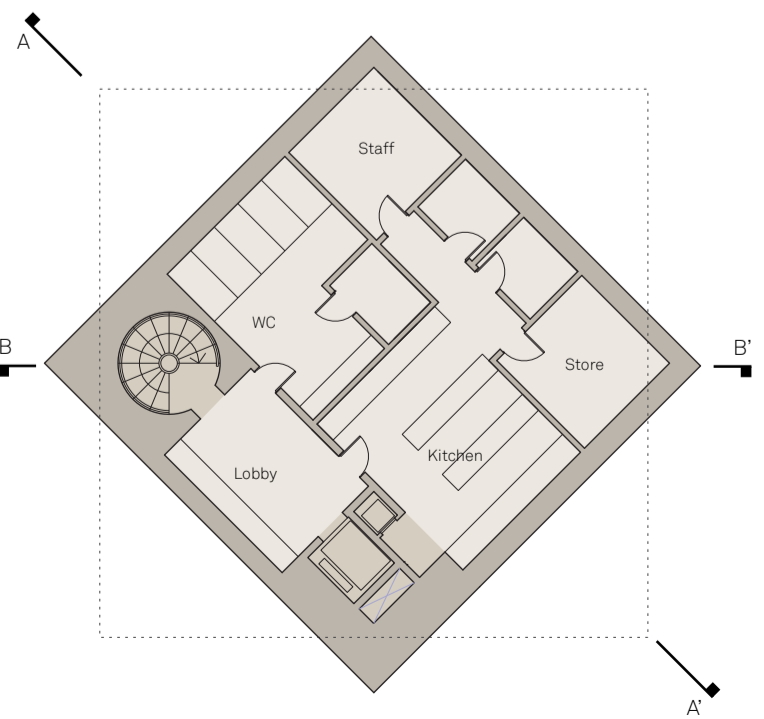
CREATING A DIVERSITY OF SPACES



Site Plan 1:200



Upper Basement Plan - Multifunctional Space - Scale 1:200



Lower Basement Plan - Kitchen and Amenities - Scale 1:200



Kings Road Elevation 1:200

**A pavilion between architecture and art practice**

The pavilion takes its sculptural form from a strong architectural response to the site, which we believe is the correct approach for creating a long-lasting and meaningful piece of townscape as well as is functionally correct for its purpose and is therefore sustainable.

**Complementary functions**

The pavilion is conceived of as a series of rooms which extend the public realm of Duke of York Square. It must also support other activities and events that may take place in the Square, although it is vital that the extra functions do not overburden or destabilise the core business plan of the cafe operator.

For this reason our project proposes a number of opportunities for using some of the spaces independently with entrances from either inside or outside the cafe.

In addition, we are proposing a large multifunctional

room that takes full advantage of the footprint of the site which is located beneath the cafe. This can be programmed with cultural events, exhibitions, small performances or even a private dining room. This could be related to (but not dependent upon) a programme of activities in the square.

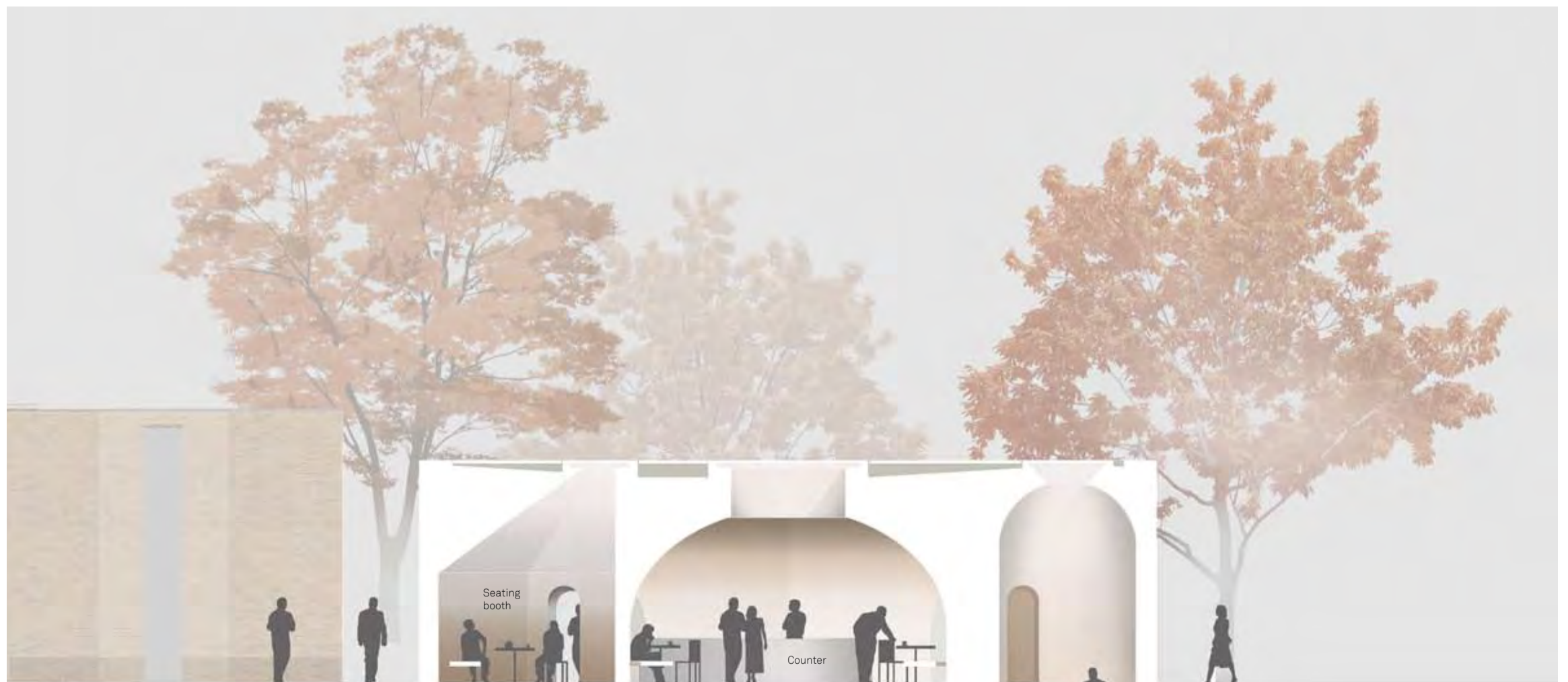
**Materials and structure**

The vaults will be built in high-quality, polished-terrazzo concrete shells, giving a rich, mineral quality to the space. It is the intention that the space feels light and airy and has a strong connection from inside to outside. A single central skylight will punctuate the joining of the four vaults and bring even more daylight deep into the plan. Warm-coloured artificial up-lighting will further accent the material qualities of the space by washing the arched walls.

The booths inside the vault bases will be lined in warm timber to give them a more intimate spatial atmosphere. Externally the mineral quality of the "carved" space will be continued in either travertine or high-quality terrazzo



Section AA' 1:100



Section BB' 1:100



Internal image looking South to running track and Saatchi Gallery